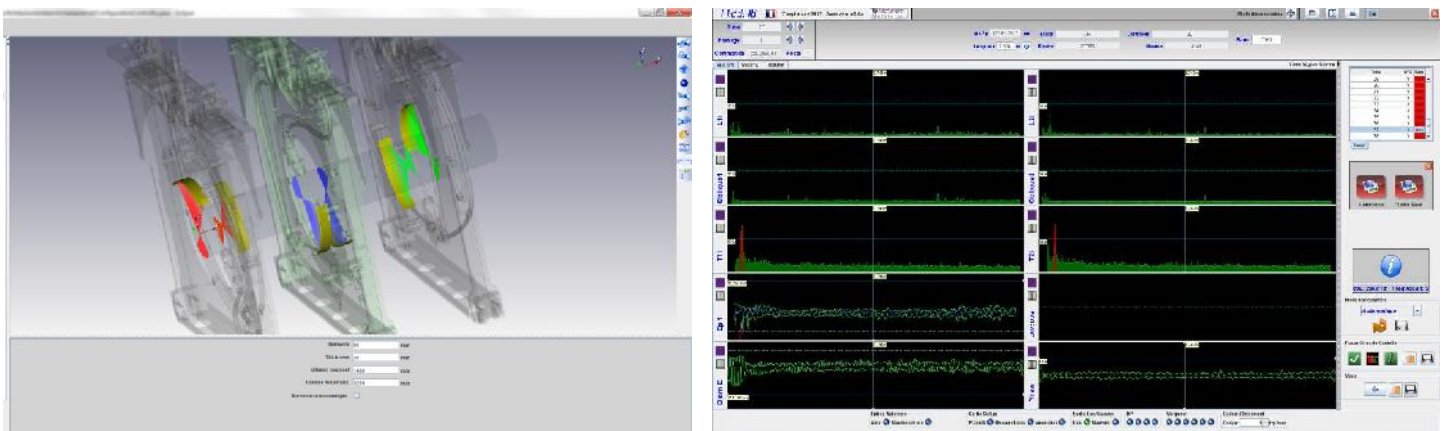
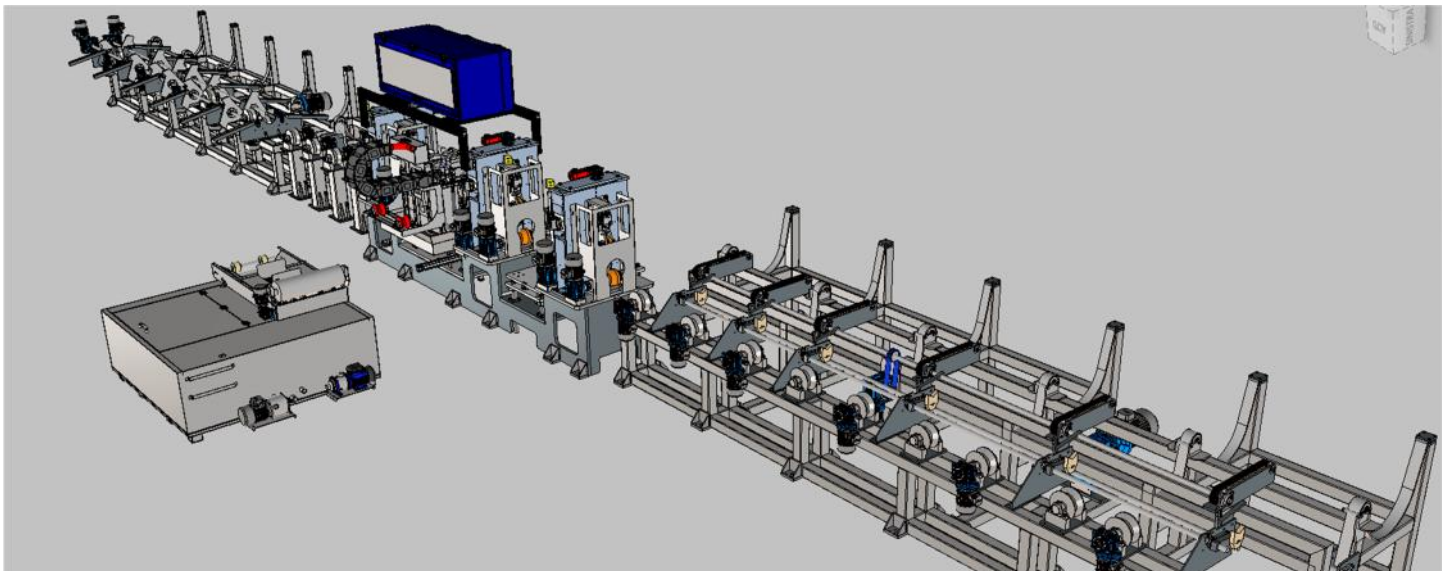


# BARS INSPECTION SYSTEM

MTS-INLINE-PA-CP 20-120 mm



**CONTACT**  
Contact@metalscan.fr - Twitter : @METALSCAN  
[www.metalscan.fr](http://www.metalscan.fr)

**tecnatom**  
Metalscan

# TECHNICAL DATA SHEET



<b>PRODUCT</b>	Bars with diameter from 20 to 120 mm
<b>LENGTH</b>	Minimum 2.5 meters
<b>BENDING</b>	3mm/m, total bending limit 3% with constant performances at +/-2.5dB in dynamic conditions of speed and sensitivity mentioned
<b>MATERIAL SURFACE CONDITION</b>	Round bars , carbon steels, alloys steels and titanium Rolled, straightened, chamfering and shot blasted
<b>FOCAL LAWS CALCULATION</b>	Metalscan Focal Laws Calculation Wizard integrated in Lineview Software
<b>DATA PRESENTATION</b>	LINEVIEW Software to manage the inspection bench and UT setup Automatic management of the inspection parameters Data and reporting saving Cscan, Bscan, Ascan and Stripchart
<b>PLC CONTROL</b>	Encoding Up/down adjustment of the elevating table following diameter inspected Paint markers integrated on the system Filtration system
<b>DETECTION PERFORMANCES</b>	LW Mode: typically FBH 0,7 mm and/or SDH 0,3x10 mm depending on the grade SW Mode: typically notch 0,3x0,3x10 mm depending the surface condition
<b>NUMBER OF PROBES</b>	Up to 2 sets of 6 probes for the LW and SW CW/CCW modes for round bars
<b>MAX SPEED</b>	Up to 2m/s depending on the diameter and type of defects inspected

## Main advantages of the FBUT – PA system:

- The multiplex firing of the Tecnatom Sonia PA 32/128 which allows:
  - ✓ High productivity : Emission/reception: up to 32 elements firing multiplexed for a higher electronic scanning on the probe to allow a good overlapping
  - ✓ High capacity of the electronic (High PRF multiplexed)
  - ✓ High repeatability : focal laws and overlapping adapted to the length of the defects
  - ✓ Configuration with the LW and CW/CCW mode , volume covering 100 %
  - ✓ Bars inspection in the range of 20-120mm without mechanical change of the probes
- LINEVIEW Software:
  - ✓ WIZARD for generating focal Laws adapted for each diameter and modes
  - ✓ LINEVIEW allows adjustment of the parameters of the system, the UT data display and the storage. An overview of the bench allows viewing the status and the position of the bar at each time.
  - ✓ UT management, storage , connected to the GPAO (SPU)
  - ✓ Fast adjustment of the system parameters
  - ✓ Recording, traceability, re read of the data; reporting and network connectivity to the plant.
  - ✓ Calibration to give a repeatability of  $\pm 2.5$ dB in dynamic conditions of speed and sensitivity mentioned
- Mechanic/Automation:
  - ✓ Strong mechanic especially adapted for inspection with high productivity
  - ✓ High centering device and compliance to follow the straightness given high repeatability
  - ✓ Elevating table which offers accurate height positioning of the UT tank frame according to the diameter inspected
  - ✓ Off-line positioning for calibration and maintenance
  - ✓ Automatic calibrator with rotation and translation movement
  - ✓ Management of alarms from UT with paint marking device

**CONTACT**  
 Parc d'Activité Val de Bourgogne  
 Rue des Artisans  
 71 240 Saint Loup de Varennes - France  
 Tél : 03.85.90.07.50 – Fax : 03.85.90.07.51  
 Contact@metalscan.fr - Twitter : @METALSCAN  
[www.metalscan.fr](http://www.metalscan.fr)

  
**tecna**tom  
 Metalscan